



**Model**

CLG2S012-WF2/N

**Drive**

Battery

**Operator type**

Pedestrian

**Load capacity**

1200kg

# CLG2S012-WF2/N PALLET STACKER

TOUGH WORLD. TOUGH EQUIPMENT.



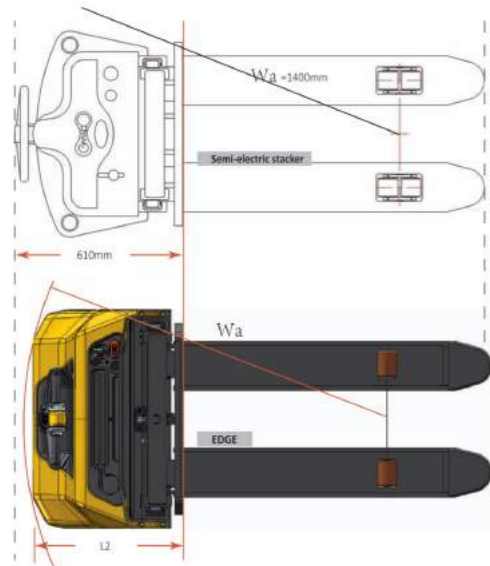
# SMART DESIGN WITH COMPACT SIZE AND PERFECT OBSERVATION

## CLG2S012-WF2/N

- 1.2T Capacity **AGM**
- Perfect for light-duty applications.
- Compact & light service weight
- High maneuverability
- Maintenance-free Lead-acid Battery
- Integrated on-board 12A charger
- Ideal for use on mezzanines

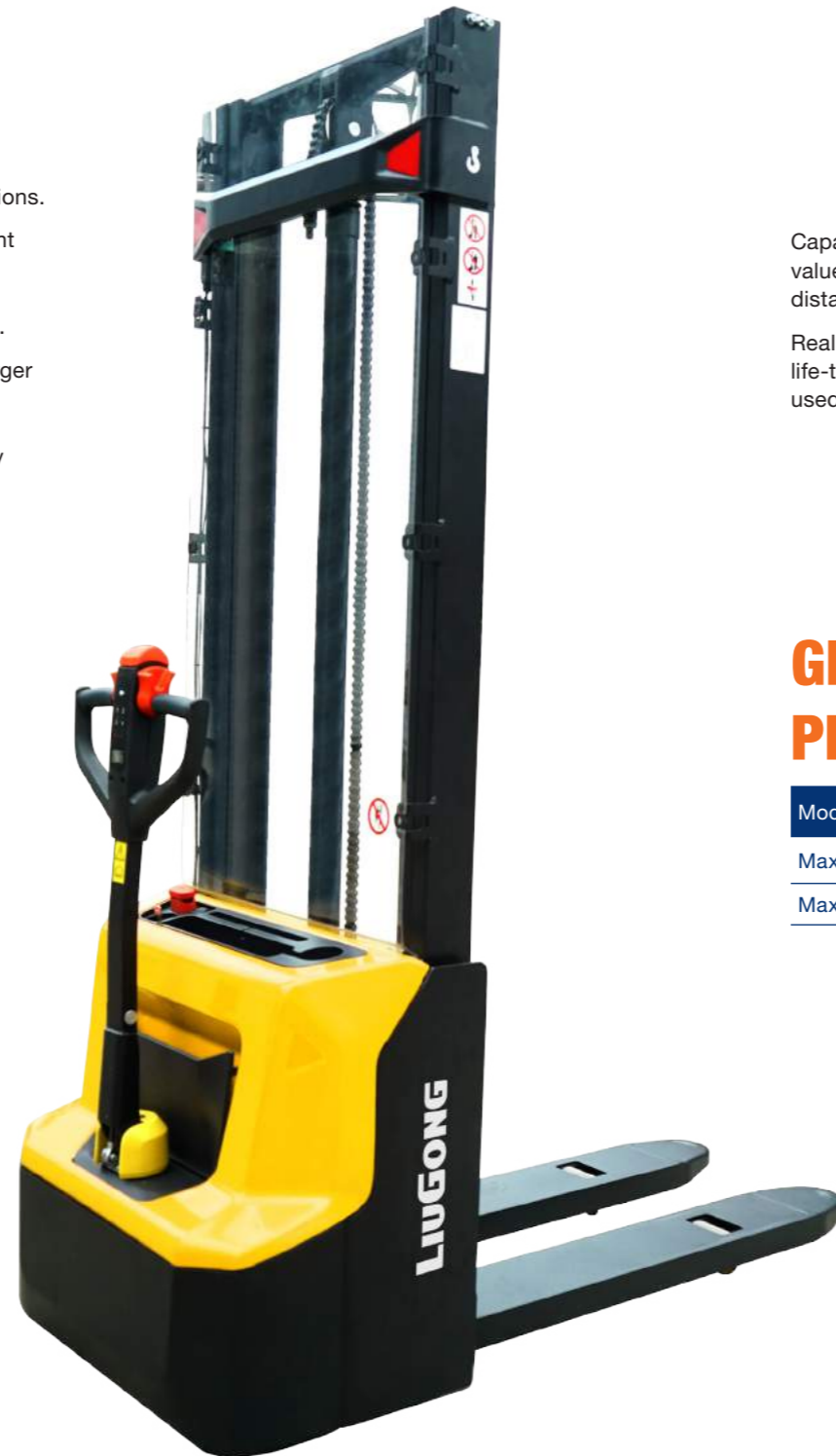
## CLG2S012-WF2/N

- 1.2T Capacity **Li-ion**
- Perfect for light-duty applications.
- Compact & light service weight
- High maneuverability
- Fast-charging Li-ion batteries.
- Integrated on-board 25A charger
- Ideal for use on mezzanines
- Ultimate solution for light duty operations



Model	CLG2S012-WF2/N
length(L2)	560mm
Turning Radius	1350mm

Our engineers put a lot of efforts to achieve compactness of the trucks in comparison with traditionally used manual and semi-electric products without sacrificing of stability, robustness, safety and operation comfort.



## ROBUSTNESS

Steel cover

The main cover is made out of steel with thickness 2.0mm



Tiller is made out of PA6 30% of glass fiber material, having high strength.

Wide mast provides perfect observation of forks, the field of view is clear and not interrupted by mast sections, cylinder or chains.



Capacity of 1200kg with high residual value at maximum height (load center distance 600 mm)

Real mast profiles are used for long life-time, no cheap bended solutions used. All directed to maintain



## GRADEABILITY PERFORMANCE

Model	
Max. grade ability laden	5%
Max. grade ability unladen	10%

The operator can always clearly see the forks which significantly increases safety of operation



Welded forks are used to ensure robustness.



5% / 10% (laden / unladen)

# VERTICAL DRIVING IN CONFINED SPACE



The function of driving with tiller in the vertical position helps with work in confined area without sacrificing of safety.

The tiller bar is supported by the air spring which helps to return the tiller to its vertical position without strike in the end point.

For increase of operation comfort and safety the trucks are equipped with speed reduction function in

# SMART AND ERGNOMIC TILLERS

Turtle Speed Button

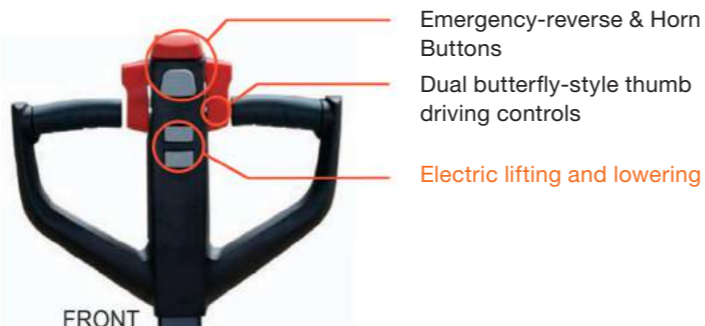
Smart Pin Code



Battery discharge indicator Operating hour counter On-board diagnostics via error codes



BACK



FRONT

RFID card Access



## RFID CARD ACCESS IS OPTIONAL FOR AGM AND STANDARD FOR LI-ION.

RFID card provides faster access to equipment and ideal for applications when one truck needs to be used by different operators

# SPECIFICATIONS

Distinguishing mark		
Manufacturer's type designation	CLG2S012-WF2/N	
Drive	Lend-acid battery	lithium battery
Operator type	Pedestrian	
Load capacity/Rated load	Q (t)	1.2
Load centre distance	c (mm)	600
Load distance,centre of drive axle to fork	x (mm)	760
Wheelbase	y (mm)	1147

Weight		
Service weight	kg	620 585
Axle loading, laden front/rear	kg	580/1240 560/1225
Axle loading,unladen front/rear	kg	450/170 440/145

Tires,chassis		
Tires	Polyurethane(PU)	
Tire size,front	xw (mm)	210x70
Tire size,rear	xw (mm)	84x93
Additional wheels(dimensions)	xw (mm)	100x50
Wheels,number front/rear(x=driven wheels)	1x+1/2	
Tread,front	b10 (mm)	550
Tread,rear	b11 (mm)	400/515

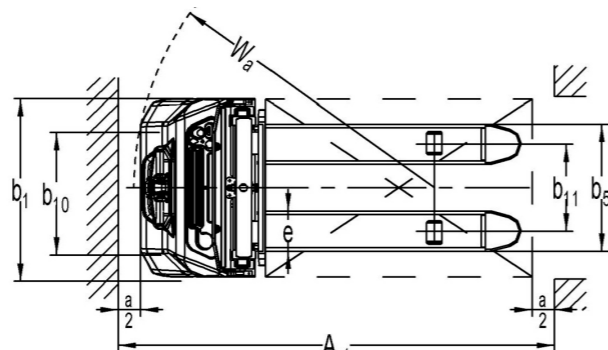
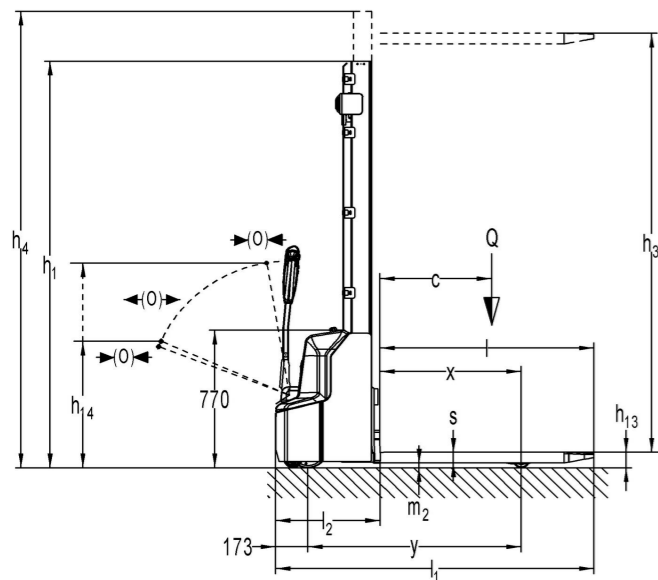
Dimensions		
Lowered mast height	h1 (mm)	2280
Free Lift height	h2 (mm)	-
Lift height	h3+h13 (mm)	3600
Extended mast height	h4 (mm)	4037
Height of tiller in drive position min./ max.	h14 (mm)	710/1150
Height, lowered	h13 (mm)	86
Overall length	l1(mm)	1710
Length to face of forks	l2 (mm)	560
Overall width	b1 (mm)	800
Fork dimensions	s/e/l (mm)	60/180/1150
Distance between fork-arms	b5 (mm)	570/685
Ground clearance, centre of wheelbase	m2(mm)	26
Aisle width for pallets 1000X1200 crossways	Ast(mm)	2197
Aisle width for pallets 800X1200 lengthways	Ast(mm)	2145
Turning radius	Wa(mm)	1350

Performance data		
Travel speed,laden/unladen	km/h	4.5/4.7
Lift speed,laden/unladen	m/s	0.12/0.19
Lowering speed,laden/unladen	m/s	0.13/0.11
Max. gradeability, laden/unladen	%	5/10
Service brake		Eletromagnetic

Electric-engine		
Drive motor rating S2 60min	kW	0.65
Lift motor rating at S3 4.5%	kW	2.2
Battery acc. to DIN 43531/35/36A,B,C,norm		No
Battery voltage,nominal capacity K5	V / Ah	2x12/85 24/60
Battery Weight(+/-5%)	kg	2x27 19
Energy consumption acc. to VDI cycle	kWh/h	0.8

Additional data		
Type of drive control		DC
Sound level at driver's ear acc. to EN 12053	dB(A)	<70

Mast table CLG2S012-WF2N				
Designation	Lowered mast height h1(mm)	Free lift height h2 (mm)	Lift height h3+h13 (mm)	Extended mast height M (mm)
Single-stage mast	1930	1514	1600	1930
	2330	1914	2000	2330
Two-stage mast	1930	-	2900	3337
	2080	-	3200	3637
	2280	-	3600	4037





**Liuzhou LiuGong Forklift Co., Ltd.**

No. 1 Yanghe Road, Liuzhou, Guangxi 545007, PR China  
T: +86 772 388 6124 E: overseas@liugong.com  
HQ: www.liugong.com  
MH: www.lgforklift.cn

Like and follow us:



**LG-PB-CLG2S012-WF2N-082020-ENG**

The LiuGong series of logos herein, including but not limited to word marks, device marks, letter of alphabet marks and combination marks, as the registered trademarks of Guangxi LiuGong Group Co., Ltd. are used by Guangxi LiuGong Machinery Co., Ltd. with legal permission, and shall not be used without permission. Specifications and designs are subject to change without notice. Illustrations and pictures may include optional equipment and may not include all standard equipment. Equipment and options varies by regional availability.